



All Shotoku dollies are folding. They are robust and easy to maneuver.  
 TD-13 and TD-32 are designed for OB/Studio camera and tripod systems.  
 TD-53 is for EFP camera and tripod systems.

## FEATURES

### TD-13 for Studio Applications

- Stand Brake to lock the position
- Eccentric wheel drive axis unit and hard wheels for smooth steering
- Wheel Drive Direction Locking Function for straight drive or tricycle drive

### TD-32 for OB Applications

- Pneumatic Tyres to absorb vibrations caused by uneven surfaces
- Wheel Drive Direction Locking Function for straight drive or tricycle drive

### TD-53 for Studio Applications predominantly

- Lever Brake locking wheel rotation and steering
- Lightweight

## SPECIFICATIONS

	TD-13	TD-32	TD-53
Max. Payload	140 kg/ 308.6 lbs	140 kg/ 308.6 lbs	60 kg/ 132.3 lbs
Max. Width (a side of triangle)	1176 mm/ 46"	1240 mm/ 49"	1037 mm/ 41"
Weight	9 kg/ 19.8 lbs	20 kg/ 44.1 lbs	5.4 kg/ 11.9 lbs
Caster Diameter	φ127	φ225	φ100
Cable Guard	option	none	option
Track Lock	standard	standard	none
Brakes	standard	standard	standard
Suitable Tripod	TT-17, TT-64	TT-17, TT-64	TT-53

Note : Cable Guard (Optional)

## ACCESSORIES

### For Crescent/TE-12HD

- **TJ-38D** Extra Short Pan Bar (φ28.3mm)



- **TJ-38E** Short Pan Bar (φ28.3mm)



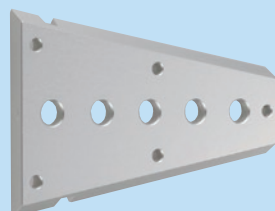
- **TJ-59** Extension (φ28.3mm, φ40mm [grip])



- **Telescopic Pan Bar** ( TJ-38E + TJ-59 )



- **TA-74G** V-shape Wedge



### For TU-03/TU-04

- **TJ-33** Telescopic Pan Bar



- **TV-53B** V-shape Wedge

